

# DIAMOND Fiber Optic Tools

## FIELD TERMINATION

### GENERAL DESCRIPTION

The pre-terminated "Alberino" pigtails or patchcords from DIAMOND are products which allow the customer to choose the required connector at the moment of installation without quality loss, thanks to the modularity of DIAMOND's "Alberino" solution.

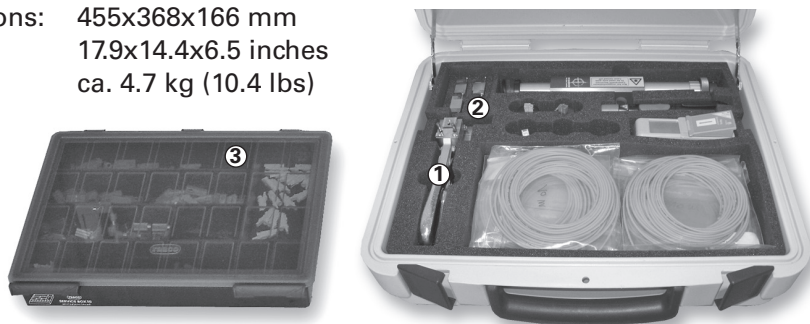
This key component also allows a significant reduction of expensive material storage. Diamond's "Alberino tool set" is supplied in a modern and robust case and contains the necessary tools for the assembly of Diamond E-2000™, SC, FC or ST™ connector housings onto "Alberino" pigtails or patchcords.

It also features a space designated to store ca. 20 Alberino patchcords of 5 meters length. Furthermore, different inspection and cleaning tools are available as option.

### APPLICATIONS

Laser manufacturers, system manufacturers, system integrators, telecommunication, CATV, LAN. . .

Dimensions: 455x368x166 mm  
17.9x14.4x6.5 inches  
Weight: ca. 4.7 kg (10.4 lbs)



### CONTENTS OF THE STANDARD ALBERINO TOOL SET

- 1 Mounting pliers for PC and APC bodies
- 2 Adapters E-2000™, SC, FC, ST™ (PC/APC) for mounting pliers
- 3 1 plastic box 338x260x57mm with connector bodies  
Assembly instructions

**NOTE** The picture above shows the set **with all the optional tools**

### ORDER INFORMATION

To order the complete kit or single parts, please refer to the part numbers provided in the enclosed P/N list.



DIAMOND SA • Via dei Patrizi 5 • CH-6616 Losone  
Tel. +41 91 785 45 45 • Fax +41 91 785 45 00 • e-mail info@diamond-fo.com

[www.diamond-fo.com](http://www.diamond-fo.com)

## Alberino Tool Set



Specifications subject to change  
without notice

BDD 1900244 038

OPTIONS

Visual Fault Locator (VFL), pen style



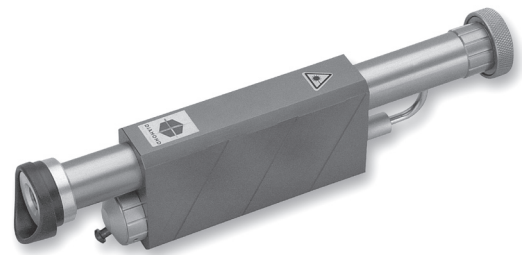
2,5 mm Ferrule cleaner



CLETOP-S easy clean cassette



Inspection microscope



Specific adapters for unmated connectors:

- E-2000™ and F-3000™ PC/APC
- FC PC & APC
- LSA (DIN) PC & APC
- MU and SC PC/APC
- ST™ and MT-RJ PC
- MFS and MPO PC/APC

