

DIAMOND Fiber Optic Tools

FIELD TERMINATION

GENERAL DESCRIPTION

The pre-terminated "Alberino" pigtails or patchcords from DIAMOND are products which allow the customer to choose the required connector at the moment of installation without quality loss, thanks to the modularity of DIAMOND's "Alberino" solution.

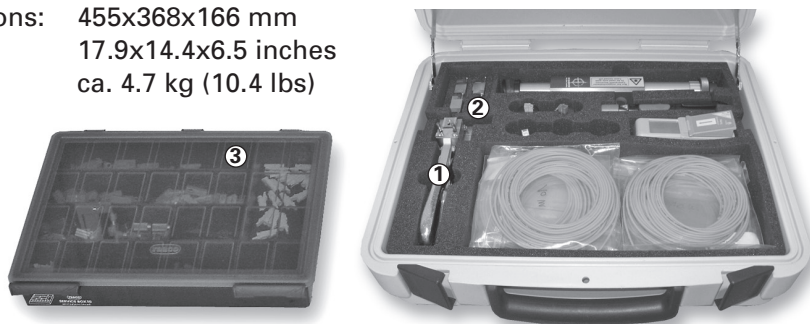
This key component also allows a significant reduction of expensive material storage. Diamond's "Alberino tool set" is supplied in a modern and robust case and contains the necessary tools for the assembly of Diamond E-2000™, SC, FC or ST™ connector housings onto "Alberino" pigtails or patchcords.

It also features a space designated to store ca. 20 Alberino patchcords of 5 meters length. Furthermore, different inspection and cleaning tools are available as option.

APPLICATIONS

Field installers, laser manufacturers, system manufacturers, system integrators, telecommunication, CATV, LAN. . .

Dimensions: 455x368x166 mm
17.9x14.4x6.5 inches
Weight: ca. 4.7 kg (10.4 lbs)



CONTENTS OF THE STANDARD ALBERINO TOOL SET

- 1 Mounting pliers for PC and APC bodies
- 2 Adapters E-2000™, SC, FC, ST™ (PC/APC) for mounting pliers
- 3 1 plastic box 338x260x57mm with connector bodies
Assembly instructions

NOTE The picture above shows the set **with all the optional tools** (see below)

ORDER INFORMATION

To order Alberino tool sets, options or single parts, please refer to the part numbers provided in the enclosed P/N list.



DIAMOND SA • Via dei Patrizi 5 • CH-6616 Losone • Switzerland
Tel. +41 91 785 45 45 • Fax +41 91 785 45 00 • e-mail info@diamond-fo.com

www.diamond-fo.com

Alberino Tool Set



*Specifications subject to change
without notice*

BDD 1900244_04_11

OPTIONS

Visual Fault Locator (VFL), pen style



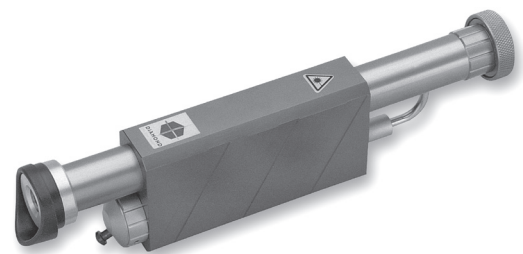
2,5 mm Ferrule cleaner



CLETOP-S easy clean cassette



Inspection microscope



Specific adapters for unmated connectors:

- E-2000™ and F-3000™ PC/APC
- FC PC & APC
- LSA (DIN) PC & APC
- MU and SC PC/APC
- ST™ and MT-RJ PC
- MFS and MPO PC/APC



Adapters for mounting pliers:

- SC - ST™
- FC - E-2000™

