

DIAMOND *flexos*

Fiber Optic Passive Components

CABLE TERMINATION BOX DIN-MOUNTING

The DIAMOND *flexModule* is a connector/splice module suitable for being installed directly onto a 35 mm DIN-Rail in various wall boxes and cabinets. This concept allows for an easy and fast module expansion at any time. The fully protected and stored pigtailed fibers in the splice-module can be utilized as a cross-connect panel, enabling an easy splice procedure without disturbing the pigtail fiber reserve. The Module consists of a basic plate, support for adapters and pigtailed fibers and one splice tray. The Splice-Module supports 12 or 24 splices and offers optimum accessibility.

FEATURES AND BENEFITS

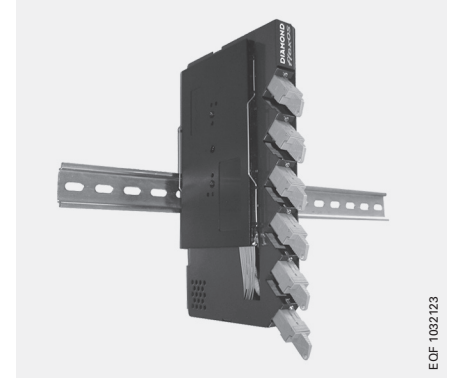
- ▶ Snap-in adapter for easy access to DIN-Rail
- ▶ Supports up to 12 fibers per connector module; 24 fibers per splice module
- ▶ Available in E-2000™, SC and ST™ connector styles
- ▶ Cable entries from different directions
- ▶ Multiple assembly versions available
- ▶ Separate fiber storage chamber provides easy installation and maintenance
- ▶ Protected Pigtail and Splice fiber reserve

SPECIFICATIONS

- ▶ Material: Powder coated charcoal grey housing color makes it easy to find and identify fibers.
- ▶ Dimensions: 26 x 220 x 120 mm (W x H x D) Conn.-Module E-2000™
41 x 220 x 120 mm (W x H x D) Conn.-Module SC, ST™
18 x 220 x 120 mm (W x H x D) Splice-Module 12 fibers
18 x 220 x 120 mm (W x H x D) Splice-Module 24 fibers

flexModule

CONNECTOR -/ SPLICE-MODULE



EOF 1032123



DIAMOND SA • Via dei Patrizi 5 • CH-6616 Losone- Switzerland
Tel. +41 91 785 45 45 • Fax +41 91 785 45 00 • e-mail info@diamond-fo.com

www.diamond-fo.com

Specifications subject to change without notice

BDD 1950590 10_11

ORDER INFORMATION

PRODUCT NAME	DESCRIPTION	ORDER NUMBER
Connector-Module 6xE-2000™ Compact RJ (12 fibres)	Connector-Module for 6xE-2000™ Compact RJ mating adapters, incl. splice tray, assembled with 6xE-2000™ and 12xE-2000™ Pigtails E-2000™ Compact RJ, MM50 µm E-2000™ Compact RJ, MM50 µm, OM3 E-2000™ Compact RJ, MM62.5 µm E-2000™ Compact RJ, SM9 µm 0° E-2000™ Compact RJ, SM9 µm 8°	EQF 1063727 EQF 1061451 EQF 1063728 EQF 1032119 EQF 1032123
Connector-Module 12xSC (12 fibres)	Connector-Module for 12xSC incl. splice tray, assembled with 12xSC Simplex mating adapters und 12xSC Pigtails SC, MM50 µm SC, MM50 µm, OM3 SC, MM62.5 µm SC, SM9 µm 0° SC, SM9 µm 8°	EQF 1060854 EQF 1063729 EQF 1063730 EQF 1040649 EQF 1040650
Connector-Module 12xST (12 fibres)	Connector-Module for 12xST incl. splice tray, assembled with 12xSC Simplex mating adapters und 12xST Pigtails ST™, MM50 µm ST™, MM50 µm, OM3 ST™, MM62.5 µm ST™, SM9 µm 0°	EQF 1040631 EQF 1040632 EQF 1040633 EQF 1040639
Splice-Module for 12 lead-through splices	Splice-Module for 12 lead-through splices, snap-in on DIN-Rail, incl. 1xsplice tray with tension relief and splice holder	EQF 1033009
Splice-Module for 24 lead-through splices	Splice-Module for 24 lead-through splices, snap-in on DIN-Rail, incl. 2xsplice tray with tension relief and splice holder	EQF 1033021

Standard Color Coding:	Connector:	Thumb-latch:
MM50	beige	beige
MM50 OM3	beige	turquoise
MM62.5	beige	beige
SM9 0°	blue	blue
SM9 8°	green	green



EQF 1040649



EQF 1040631



EQF 1033009

