

# DIAMOND *flexos*

## Fiber Optic Passive Components

### WALL DISTRIBUTOR

The Diamond *flexBox* Vario wall distributor was specifically developed for fiber optic applications. The *flexBox* Vario is equipped with DIN-Rails for simple and easy installation of active and passive components. This supports the installation of 12 to 144 fibers and allows for easy integration and fiber accessibility. Additional Industrial components can be added to the rail if desired.

The box is made out of sheet metal, powder-coated in light grey RAL 7035 and rated IP 54. Cables support brackets are located on each side of the box providing flexibility for patchcord routing and cable reserve.

The cable entry has various sized pre-punched knockout holes for easy access and the cable can be secured and protected by cable strain reliefs.

### FEATURES AND BENEFITS

- ▶ DIN Rail for installation of active and passive components
- ▶ Cable entry on lower and upper side
- ▶ Multiple punched cable entry flange with plugs for various cable diameters
- ▶ Patchcord management
- ▶ 19" Rack mounting set
- ▶ Mountable grounding bar
- ▶ Door with ground strap
- ▶ Plastic map on the back of the door, include drilling instructions

### DELIVERY LIST

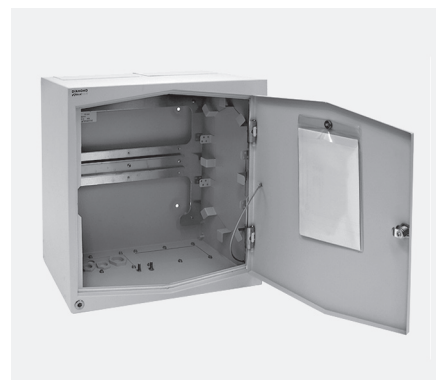
- ▶ Wall distributor box
- ▶ Punched mounting board
- ▶ Pre-assembled DIN Rail on mounting board
- ▶ Punched cable entry flange with plugs
- ▶ 3 cable entry blind plates
- ▶ 19" Rack mounting set

### SPECIFICATIONS

WALL DISTRIBUTOR BOX	HEIGHT (mm)	WIDTH (mm)	DEPTH (mm)	WEIGHT (kg)	QUANTITY <i>flexModule</i> E-2000™ at 12 Fs	QUANTITY <i>flexModule</i> SC, ST™ at 12 Fs	QUANTITY <i>flexModule</i> Splice at 12/24 Fs
<i>flexBox</i> Vario	440	430	220	13,5	12	8	18

### *flexBox* Vario

EQUIPPED WITH DIN RAIL



## ORDER INFORMATION

SHORT DESCRIPTION	DESCRIPTION	ORDER NUMBER
flexBox Vario IP54 (440x 430x 220)	Wall distributor box, sheet metal, IP54, powder-coated surface, RAL7035, mounting board including DIN rail (HxWxD, 35x 370x10mm), 1x cable entry plate, 3x blind plates, 19" rack mounting set	EQF 1037038

## ACCESSOIRES

SHORT DESCRIPTION	DESCRIPTION	ORDER NUMBER	ORDER NUMBER
Cable gland M16 cable Ø 4-9,5 mm	brass-nickel-plated cable gland M16, metric thread, IP68	BKY 1022651	EQN 1035343
Lock-nut M16	Standard lock-nut M16, brass-nickel-plated	EQF 1034096	
Cable gland M20 cable Ø 7-13 mm	brass-nickel-plated cable gland M20, metric thread, IP68	BKY 1022652	EQN 1035344
Lock-nut M20	Standard lock-nut M20, brass-nickel-plated	BAC 1026390	
Cable gland M25 cable Ø 8-16 mm	brass-nickel-plated cable gland M25, metric thread, IP68	BKY 1022653	EQN 1035345
Lock-nut M25	Standard lock-nut M25, brass-nickel-plated	EQF 1034097	
Cable gland M32 cable Ø 11-21 mm	brass-nickel-plated cable gland M32, metric thread, IP68	EQF 1034098	EQN 1035346
Lock-nut M32	Standard lock-nut M32, brass-nickel-plated	EQF 1034099	
Cable entry plate	Cable entry plate flexbox Vario (LxH, 180x80mm), with 1xM32, 2xM25, 2xM20, 2xM16 waterproof plugs, includes fixing screws	EQF 1037043	
Blind plate	Blind plate (LxH, 180x80mm) includes fixing screws	EQF 1037044	



Cable gland / Lock-nut



Cable entry plate



Blind plate