

DIAMOND *flexos*

Fiber Optic Passive Components

flexPatch 1U accessories

PATCH PANELS AND DISTRIBUTORS

Diamond flexPatch accessories provide an optimal fiber management to maintain minimum bend for optimum performance and long term reliability. Overlength could be organized space saving, well organized and individual by the customers own account.

PERFORMANCES

- ▶ Flexible applications
- ▶ Customized equipable
- ▶ Minimum space requirements



Patchcord overlength storage

BEY 1056353

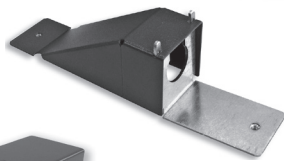


FanOut/ DiaFlex mounting set
 2x M25 (24Fs)
 2x M20 (8/12Fs)
 1x M25 (24Fs) + M20 (8/12Fs)

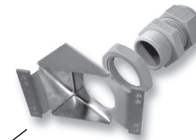
Multi cable-entry with blind plugs
 1x M25 (24Fs)
 2x M20 (12Fs)
 4x M12 (4-6Fs)



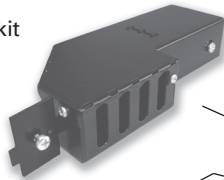
180° rotatable cable entry kits



PG16/M20 Cable gland



Lose tube splitter kit



4 knock out cable access points, on both sides and rear of unit

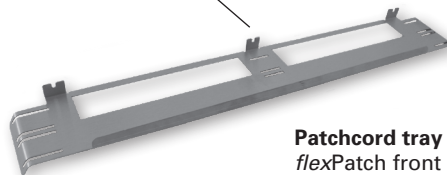
Strain relief kit



Cable entry with rodent protection for additional installation rear



Patchcord tray for flexPatch front panel



DIAMOND SA • Via dei Patrizi 5 • CH-6616 Losone • Switzerland
 Tel. +41 91 785 45 45 • Fax +41 91 785 45 00 • e-mail info@diamond-fo.com

www.diamond-fo.com

Specifications subject to change without notice

BDD 1951291 02_16

ORDER INFORMATION

Accessories for flexPatch and flexPatch fix

PRODUCT NAME	DESCRIPTION	ORDER NUMBER
Break-out strain relief with brush strip	Strain relief bar incl. brush strip for attaching a cable using a cable tie or velcro fastener	EQN 1023395
Straight cable gland	Compression style (M20) cable strain relief kit, for cable Ø 9-13 mm	EQN 1024072
PG screw connection with 30° angle	30° angle for PG16/M20 screw connection	EQN 1025348
Cable entry 180° for FanOut	Cable entry 180°, rotatable M16 = Fan-Out 6x M20 = Fan-Out 12x M25 = Fan-Out 24x M32 = Fan-Out 48x	EQN 1042016 EQN 1023394 EQN 1024060 EQN 1024071
Cable entry 180° for cable gland	Cable entry 180°, rotatable, metric M16, cable Ø 4 - 9.5mm M20, cable Ø 7 - 13 mm M25, cable Ø 8 - 16 mm	EQN 1055668 EQN 1040114 EQN 1055667
Cable entry 4x FanOut	Straight cable entry 4x FanOut 12 -fold (M20)	EQN 1031521
Multi cable entry	Straight cable entry 4x FanOut 12 -fold (M20) 1x 24-fold (M25), 2x 12-fold (M20), 4x 4-6-fold (M12)	EQN 1049021
Loose tube splitter kit (Right)	Lose tube splitter kit (12 fiber versions) complete with 10mm Ø PVC shrink tube	EQN 1023398
Rodent protection	Small guard plate with predetermined breaking points for breaking out, in addition to the two rear fold-out cable entries	EQN 1049007
Patchcord tray	Tray for patchpanel 1U	EQN 1023399
Mounting Set FanOut/ DiaFlex	2x M25 (24Fs) 2x M20 (8/12Fs) 1x M25 (24Fs) + M20 (8/12Fs)	EQN 1075400 EQN 1076667 EQN 1076666



19" Patchcord tray 1U



19" Patchcord guide panel 1U

Accessories 19" 1U

PRODUCT NAME	DESCRIPTION	ORDER NUMBER
Patchcord guide panel	19" 1U Patchcord guide with 5 plastic rings, includes mounting hardware	EQN 1022075
Patch cable overlength drawer: one front hole	19" 1U patch cable drawer with anti-dust brush 19" 1U patch cable drawer with anti-dust brush and cable entries on the left and right-hand sides	EQN 1026335 EQN 1056353
1U flexStorage cable storage compartment	19" 1U cable storage compartment incl. radius limiter on the left and right-hand sides 19" 1U cable storage compartment incl. front rail with 1 rubber patch cable entry	EQN 1041225 EQN 1034649
ETSI adaptor kit	1U, 19" to ETSI rack mounting conversion kit, includes mounting hardware	EQN 1024225