

DIAMOND

Fiber Optic Equipments

Inspection microscope

INSPECTION EQUIPMENTS

GENERAL DESCRIPTION

This compact, light weight and ergonomic Inspection Microscope is ideal for inspecting ferrule and fiber endfaces in the field or the laboratory.

The microscope provides dual-illumination, both coaxial and oblique, to produce the highest-quality image detail and superior view of fiber end face cleanliness and core condition.

Foldback rubber eyecup allows a tightfit and eliminates all reflections given by incident lights into the eye piece.

Universal adapter \varnothing 2.5 mm, and 1.25mm as well as soft case are included. Other interchangeable connector specific adapters are available upon request.



TECHNICAL SPECIFICATIONS

Application:	Multimode and Single Mode
Optical Magnification:	200x
Power requirement: :	3x LR44
LED lifetime:	100,000 hrs
Weight:	210 gr.
Dimensions:	L= 190mm; \varnothing 48mm
Light controls:	Button for coaxial or oblique illumination
Safety filter:	Built-in filter
Adapters:	Universal adapter \varnothing 2.5mm, \varnothing 1.25mm

OPTIONS

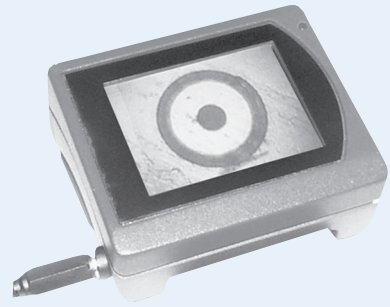
E-2000[®], F-3000[®] and FSMA connector specific adapters.

ATTENTION This hand microscope shall be used only with Laser turned off.

WARNING Laser light may damage your eyes.

ADVISE When Laser can not be turned off use Video Inspection Microscope (see picture).

For more information see specific data sheet.



ORDER INFORMATION

Please refer to the part numbers provided in the separate P/N list.

For other configurations, please contact your nearest local Diamond representative or fill in the contact form available on the www.diamond-fo.com website.