

DIAMOND *flexos*

Fiber Optic Passive Components

flex module mini

CABLE TERMINATION BOX DIN-MOUNTING

The DIAMOND flex module mini is suitable for installing housings and cabinets with a 35 mm top-hat rail. The outgoing plug-in connection can be optimally guided with the center pieces projecting downward. Up to four fibers can be connected as a splice or fan/breakout. The very compact design is ideal for retrofitting in confined spaces.

TECHNICAL DATA

Construction method:	DIN rails mounting
Number of ports:	4
Front interface:	2x E-2000® duplex
Rear interface:	2x E-2000® duplex
Fiber type:	Meets standards ITU-G.652.D and ITU-G.657.A1
Fiber marking:	Color coding on fiber and jacket port
Numbering:	1-4
Labeling field:	Paper strip with transparent cover
Configuration:	- including pigtail for splicing with ANT Splice protection - with no pigtail, for fanout or breakout
Housing material:	Anodized aluminum
Cable entry:	M20 for cables from 7mm - 14mm or four fiber fanout splitter
Temperature when operating:	Plug and adapter -40°C to 85°C
Dimensions:	See drawings
Weight:	0.3 kg
Delivery condition:	Pre-assembled RoHS
REACH-compliant:	Yes

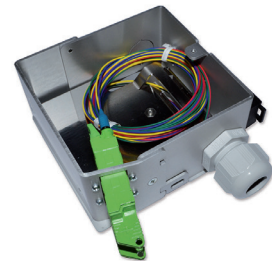
PRODUCT NAME	DESCRIPTION	ARTICLE NUMBER
<i>flexModul</i> mini - splicing	Equipped with: - 1x DIN housing with cable entry - 2x E-2000® Compact dx centerpieces, - 4x pigtail E-2000® Simplex, APC, SM - 4x splice protection ANT	1085560
<i>flexModul</i> mini - preassembled	Equipped with: - 1x DIN housing with cable entry - 2x E-2000® Compact dx centerpieces	1083489
Options	- E-2000® PC SM - E-2000® PC MM OM1 - E-2000® PC MM OM2 - E-2000® PC MM OM3 - E-2000® PC MM OM4	Upon request



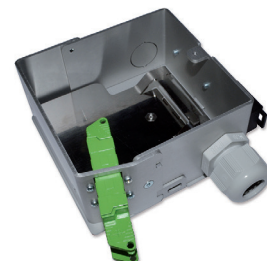
flex module mini - front view



flex module mini - rear view



flex module mini splicing - 1085560



flex module mini - pre-assembled - 1083489

