

DIAMOND

Fiber Optic Components

CABLE ASSEMBLIES AND ADAPTERS

The revos E-2000® connector system provides exceptional optical performance through 2 optical channels in a robust, space-saving design, and is IP65-rated and shock-resistant.

The rugged design makes it particularly suitable for heavy industrial applications requiring long transmission distances, high data rates and reliability in harsh environment.

The revos E-2000® connector can be terminated on most MM and SM cable constructions. It is available with Diamond's Active Core Alignment with both PC and APC polishing, providing both low insertion and high return loss.

FEATURES AND BENEFITS

- ▶ Robust IP65-rated enclosure
Dust-tight and protects against water jets
- ▶ Integrated caps and shutters
Laser eye safety
- ▶ E-2000™ connector with Active Core Alignment
Exceptional optical performance
- ▶ Easy lever locking

AVAILABLE TYPES

- ▶ Terminated connector
- ▶ Connector set, to be terminated using Diamond equipment
- ▶ Field assemblable Fusion version available

SPECIFICATIONS

	MULTIMODE 0° PC	SINGLE MODE 0° PC	SINGLE MODE 8° APC	UNITS	TEST CONDITIONS
Insertion Loss (IL) Standard	typ. 0.1 max 0.25	typ. 0.1 max. 0.25	typ. 0.1 max. 0.25	dB	IEC 61300-3-4; λ = 1300/1550nm
Insertion Loss (IL) Fusion	typ. 0.25 max 0.5	typ. 0.25 max 0.5	typ. 0.25 max 0.5	dB	IEC 61300-3-4; λ = 1300/1550nm
Return Loss (RL)	typ. 40	min. 50	min. 75*	dB	IEC 61300-3-6; λ = 1300/1550nm
Repeatability of IL	max. ±0.1			dB	Over service life
Service life	500 mate/demate cycles				
Operating temperature	-40/+85**			°C	

* Measured with high precision reflectometer

** May be further limited by cable specifications

ORDER INFORMATION

Please refer to the part numbers provided in the separate P/N list.
For assemblies or other configurations, please contact your nearest local Diamond representative or fill in the contact form available on the www.diamond-fo.com website.



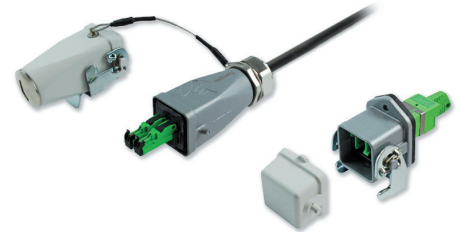
DIAMOND SA | Via dei Patrizi 5 | CH-6616 Losone - Switzerland
Tel. +41 58 307 45 45 | e-mail info@diamond-fo.com

www.diamond-fo.com

revos E-2000®

(Harsh Environment)

SINGLE MODE PC/APC
MULTIMODE PC



revos E-2000® connector and bulkhead, 2 optical channels

Specifications subject to change
without notice

BDD 1951483 08_20

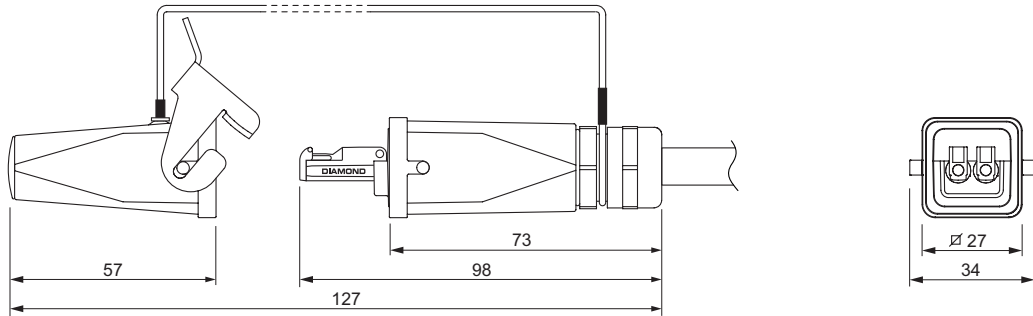
CONNECTOR AND BULKHEAD TYPES AND DIMENSIONS

revos E-2000® connector (2 optical channels)

Available types: **revos E-2000® PC / APC**

Housing material: Cast Zinc, with grey powder coating

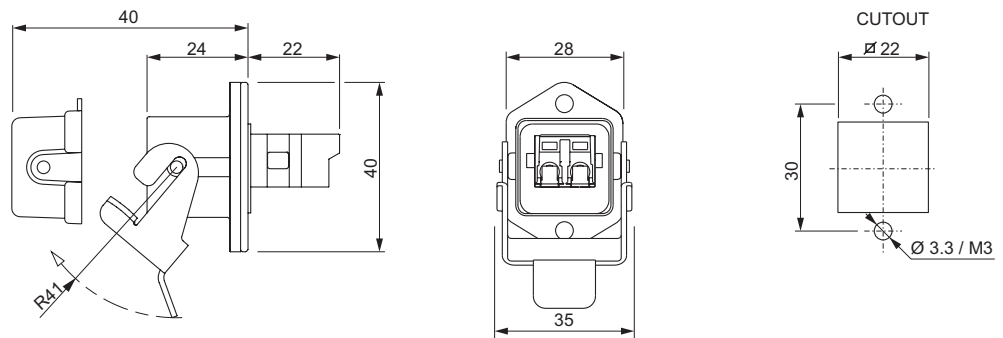
Cap material: Metal / White plastic, UL94 V0, UV-resistant



revos E-2000® bulkhead (2 optical channels)

Housing material: Cast Zinc, with grey powder coating

Cap material: White plastic, UL94 V0, UV-resistant



NOTE As standard, Diamond uses colored E-2000® connector bodies and E-2000® mating adapters to identify the fiber type (SM or MM) and ferrule polish (PC or APC). Diamond's standard **connector/adaptor** colors are as follows: Beige/Beige for MM PC, Blue/Blue for SM PC, and Green/Green for SM APC. Other colors are available upon request.