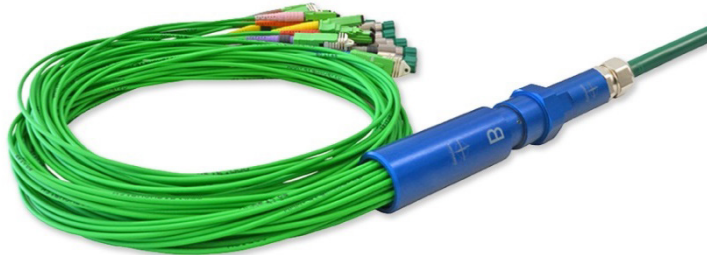




DiaFlex System

Flexible Fan-Out solution





■ What is a DiaFlex?

- DiaFlex is a combination of a fiber whip and a multi-fiber (MFS) connector up to 24 fibers
- It is a unique Fan-Out with replaceable whips for Outdoor cable



■ Where can it be used?

- Everywhere a pre-assembled system is needed and the installation time must be reduced



When is the use of the DiaFlex worthwhile

■ We recommend this product if...

- ... flexibility is required, e.g. in temporary installations.
- ... pipes or cable ducts are small.
- ... you do not want to use expensive splices.
- ... connections have to be upgraded or retrofitted.
- ... a preassembled solution is required.



Advantages



DiaFlex with protective and feed-in cap



Comparison Standard Fan-Out / DiaFlex

- Replaceable fiber whips
- Protective cap with feed-in eye
- IP class: IP68
- Simple to use on site and no expensive splicing work necessary
- Robust metal fiber divider
- Flexible use thanks to the small external diameter
- Client-specific connector types and cable lengths
- Time saving on site (example):
 - Splice of 48 fibers into a FlexPatch: 2 - 3 h.
 - 48 connections into a FlexPatch: 20 min.
 - Connection of 2 DiaFlex: 2 min.
- **Error reduction:**
 - Splice or connection errors: 1-5% from all fibers
 - DiaFlex connections: 0%

SPECIFICATIONS (only DiaFlex connection)

	MULTIMODE 0° PC	SINGLE MODE 0° PC	SINGLE MODE 8° APC (not 24 channels)	UNITS	TEST CONDITIONS
Insertion Loss (IL)	typ. 0.35	typ. 0.25 max. 0.75	typ. 0.25 max. 0.75	dB	IEC 61300-3-4
Return Loss (RL)	typ. 30	min. 40	min. 60*	dB	IEC 61300-3-6
Repeatability of IL	max. ±0.2			dB	IEC 61300-2-2
Service life	500 mate/demate cycles				
Operating temperature	-25/+70**			°C	IEC 61300-2-22
Storage temperature	-25/+70**			°C	
Cable retention (Multi fiber cable side)	700			N	IEC 61300-2-4

* Measured with high precision reflectometer

** May be further limited by cable specifications

DiaFlex into FlexPatch



■ As pre-assembled 19" FlexPatch version

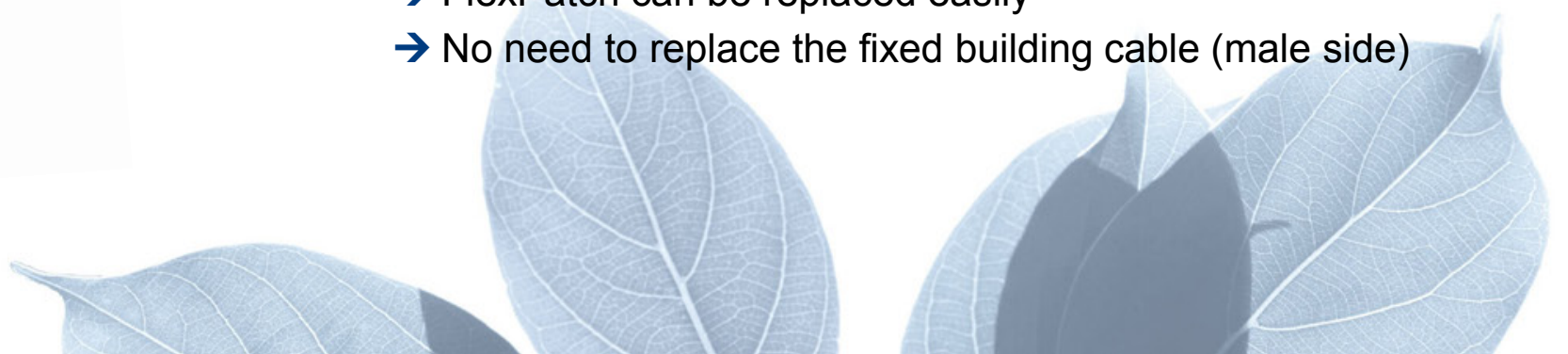
- Up to 48 fibers
- Integration of 1 or 2 DiaFlex (12 or 24 fibers)
- All types of connectors on fan-out side available

■ During the installation:

- The installer does not need to open the FlexPatch
- The installer must only connect the DiaFlex male

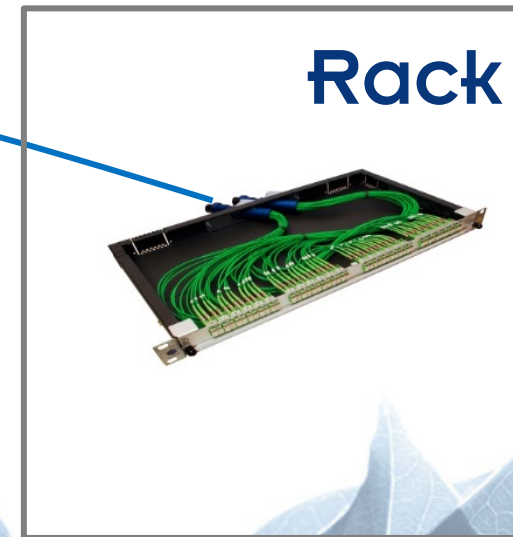
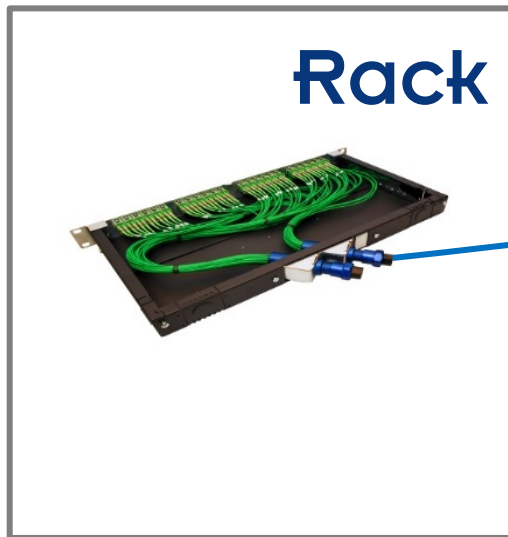
■ Futures Interventions

- FlexPatch can be replaced easily
- No need to replace the fixed building cable (male side)



Application examples

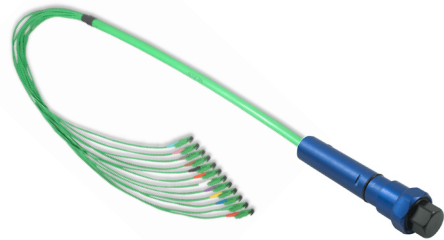
- Rack to Rack
- Permanent Installation
- Building to building
- Under floor distribution to the server room



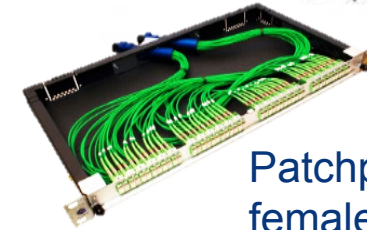
Application examples



Temporarily used equipment

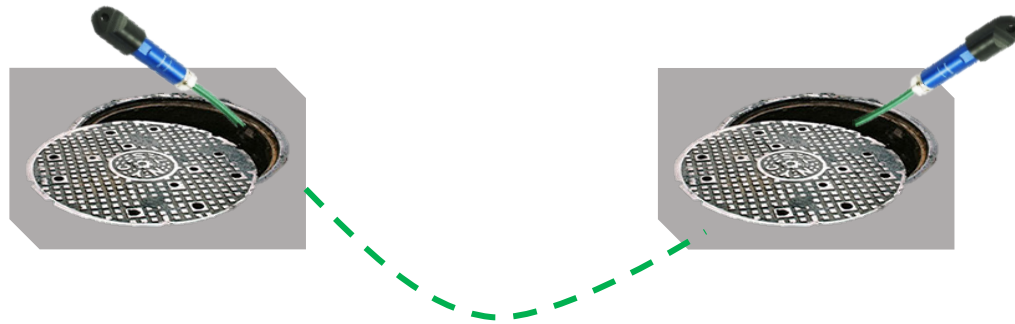


DiaFlex female to Break-Out



Patchpanel with female Diaflex

Permanent cabling



DiaFlex male-male

More...

■ More information about:

→ Technical specifications

→ Cable specifications

→ Dimensions

→ Available configurations

→ Ordering

See: [Diamond Webseite](#)